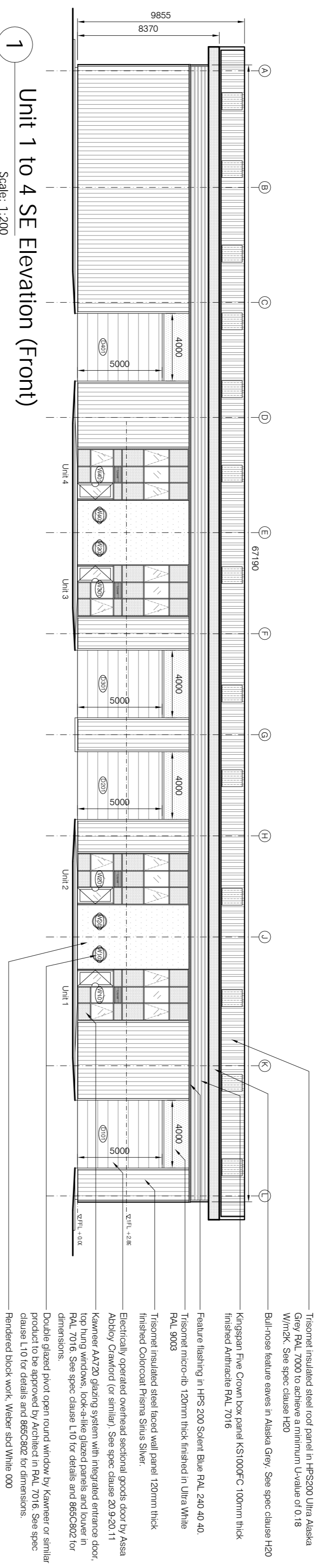


NOTE:	External envelope minimum U-value:
Roof	0.18 W/m ² K
Floor Light	3.72 W/m ² K
Wall	0.27 W/m ² K
Windows	1.6 W/m ² K
Doors	2.2 W/m ² K
Vehicle Doors	1.5 W/m ² K

Rain Water Pipe:
RWP sizes and locations to be provided by Contractor and/or cladding and roofing specialist, and approved by Architects and Engineers.

REVISIONS	DATE
A Design development revision.	08 11 17
B Revision to structural grid 1FL increased by 170mm to engineer's comments.	30 11 17



Triosmet insulated steel roof panel in HPS200 Ultra Alaska Grey RAL 7000 to achieve a minimum U-value of 0.18 W/m²K. See spec clause H20

Bull-rose feature eaves in Alaska Grey. See spec clause H20

Kingspan Five Crown box panel KS1000FC 100mm thick finished Antiraciale RAL 7016

Feature flashing in HPS 200 Solent Blue RAL 240 40 40.

Triosmet micro-rib 120mm thick finished in Ultra White RAL 9003

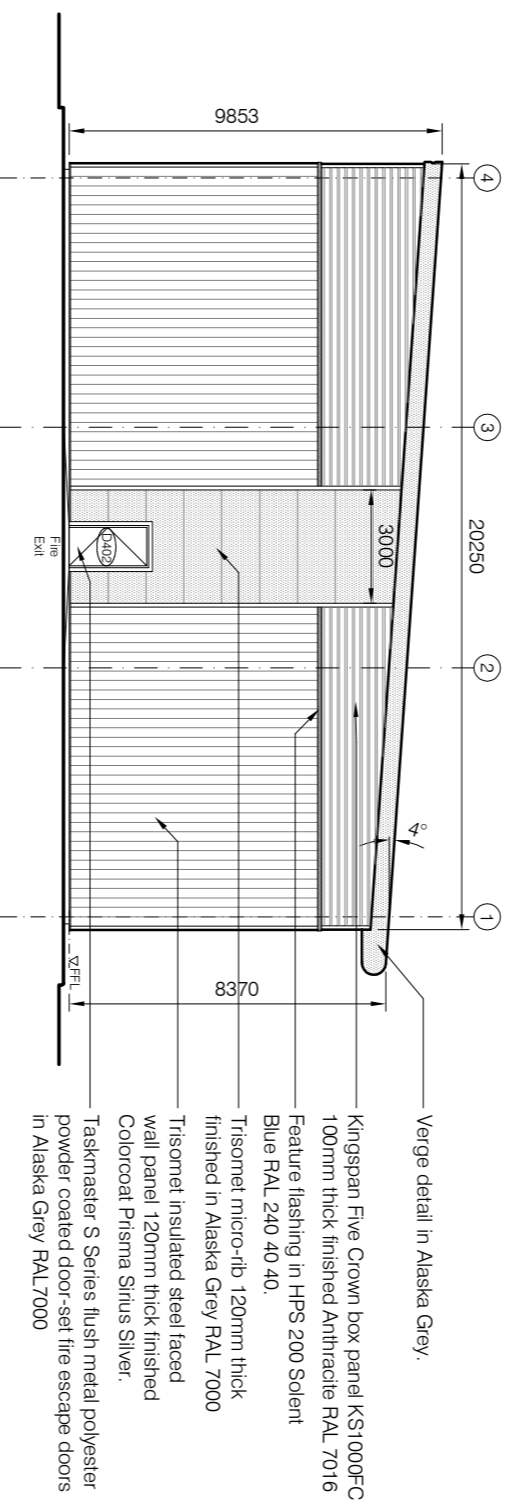
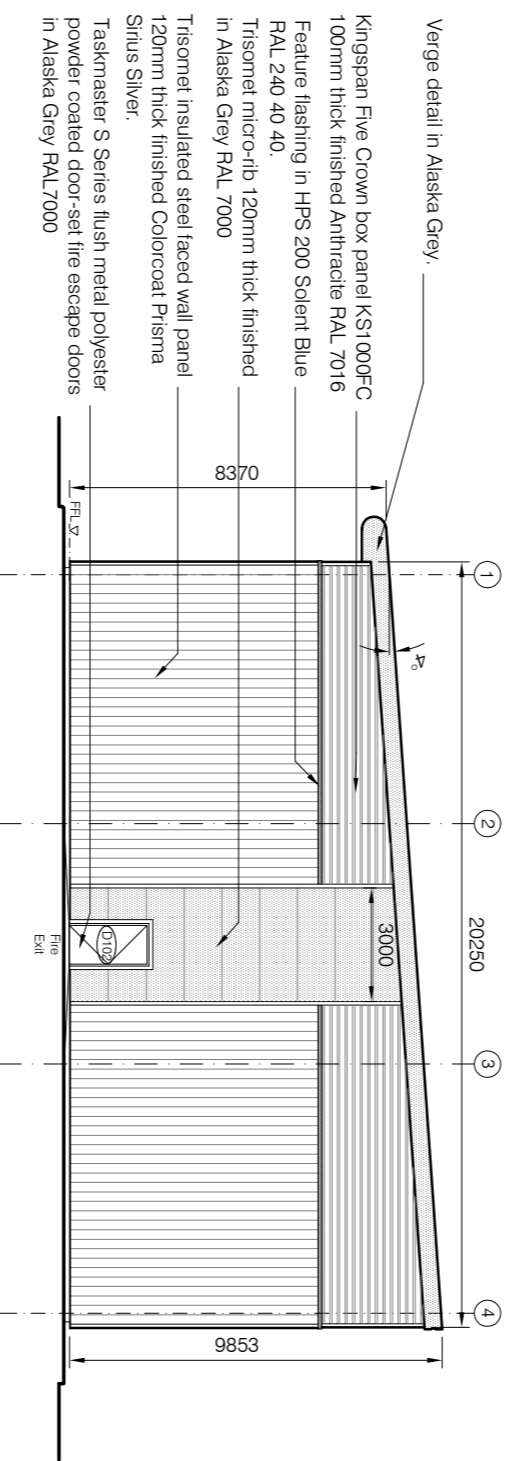
Triosmet insulated steel faced wall panel 120mm thick finished Colorcoat Prisma Sirius Silver.

Electrically operated overhead sectional goods door by Assa Abloy Crawford (or similar). See spec clause 20.9.20.11

Kammeer AA720 glazing system with integrated entrance door, top hung windows, lock-d-like glazed panels and louver in RAL 7016. See spec clause L10 for details and 865C082 for dimensions.

Double glazed fixed open round window by Kammeer or similar product to be approved by Architect in RAL 7016. See spec clause L10 for details and 865C082 for dimensions.

Rendered block work, Weber std White 000



Verge detail in Alaska Grey.

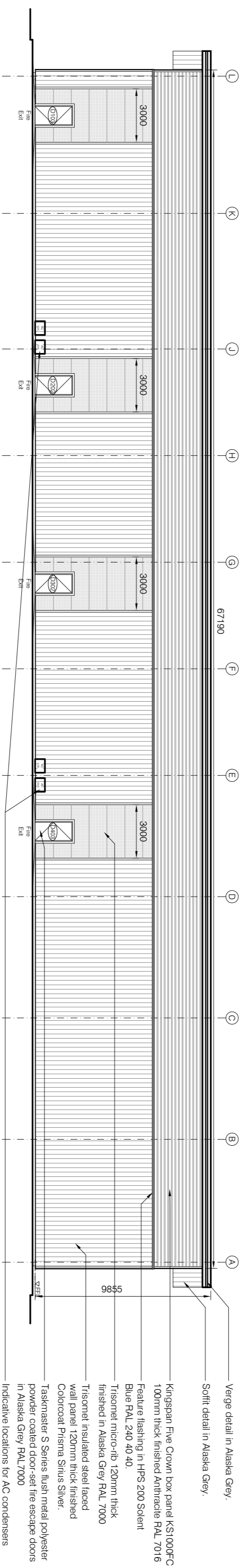
Kingspan Five Crown box panel KS1000FC 100mm thick finished Antiraciale RAL 7016

Feature flashing in HPS 200 Solent Blue RAL 240 40 40.

Triosmet micro-rib 120mm thick finished in Alaska Grey RAL 7000

Triosmet insulated steel faced wall panel 120mm thick finished Colorcoat Prisma Sirius Silver.

Taskmaster S Series flush metal polyester powder coated door-set fire escape doors in Alaska Grey RAL7000



Verge detail in Alaska Grey.

Soffit detail in Alaska Grey.

Kingspan Five Crown box panel KS1000FC 100mm thick finished Antiraciale RAL 7016

Feature flashing in HPS 200 Solent Blue RAL 240 40 40.

Triosmet micro-rib 120mm thick finished in Alaska Grey RAL 7000

Triosmet insulated steel faced wall panel 120mm thick finished Colorcoat Prisma Sirius Silver.

Taskmaster S Series flush metal polyester powder coated door-set fire escape doors in Alaska Grey RAL7000

Indicative locations for AC condensers (AC unit in Silver Metallic RAL 9006 to ERS specification)

the D.C.M.
Partnership

THE D.C.M. PARTNERSHIP
100, NORTH BRIDGE ROAD, SUITE 1201
TEL: 6733 0144 FAX: 6733 0144
EMAIL: DCMPARTN@NETSCAPE.COM

Blakelands LLP

Unit 1-4 Elevations

865/C/401B

Pinces Business Centre
Summerleys Road

SCALE: 1:2000 @ A2
DATE: 19 10 17

ISSUED FOR APPROVAL FOR CONSTRUCTION AS SHOWN

For Tender

ISSUED FOR APPROVAL FOR CONSTRUCTION AS SHOWN	DRAWN: JSS	CHECKED:
---	------------	----------