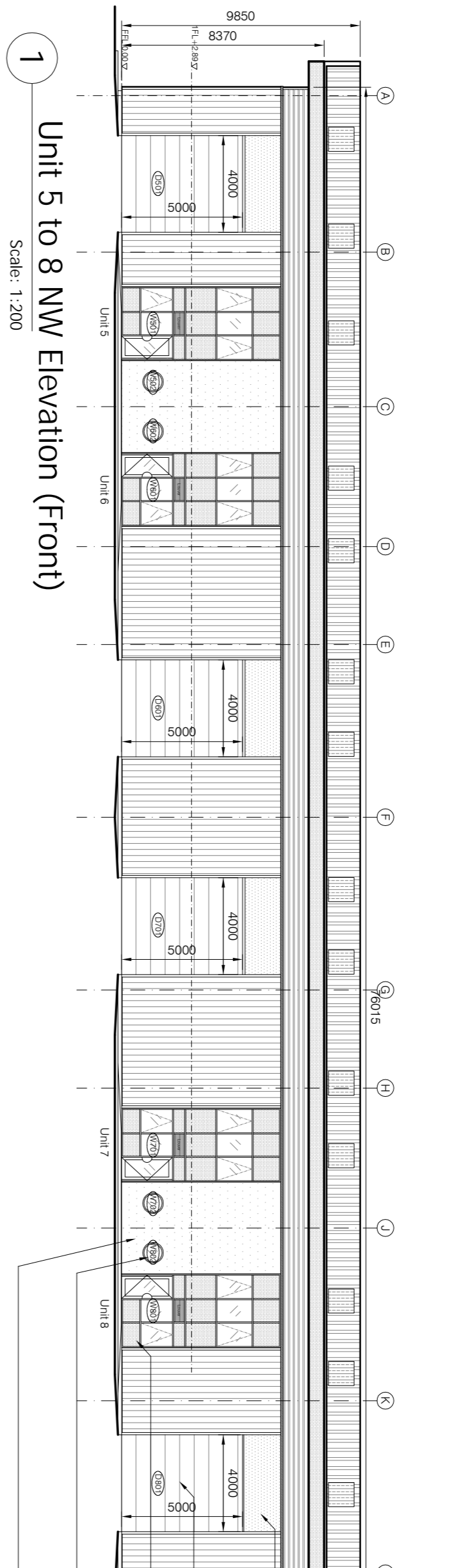


NO.	REVISIONS	DATE
A	Design development revision. Revision to structural grid, 1FL increased by 170mm to engineer's comments. Unit numbering revised.	08 11 17
B	Office curtain walls and windows repositioned to match U1-4.	20 11 17
C	Revision to curtain wallings to include window openings and lower, look-alike panels composition revised. Indicative locations for AC condensers added to rear elevation.	30 11 17

NO.	External envelope minimum U-value:
Roof	0.18 W/m <sup>2</sup> K
Floor Light	3.72 W/m <sup>2</sup> K
Wall	0.27 W/m <sup>2</sup> K
Windows	1.6 W/m <sup>2</sup> K
Doors	2.2 W/m <sup>2</sup> K
Vehicle Doors	1.5 W/m <sup>2</sup> K

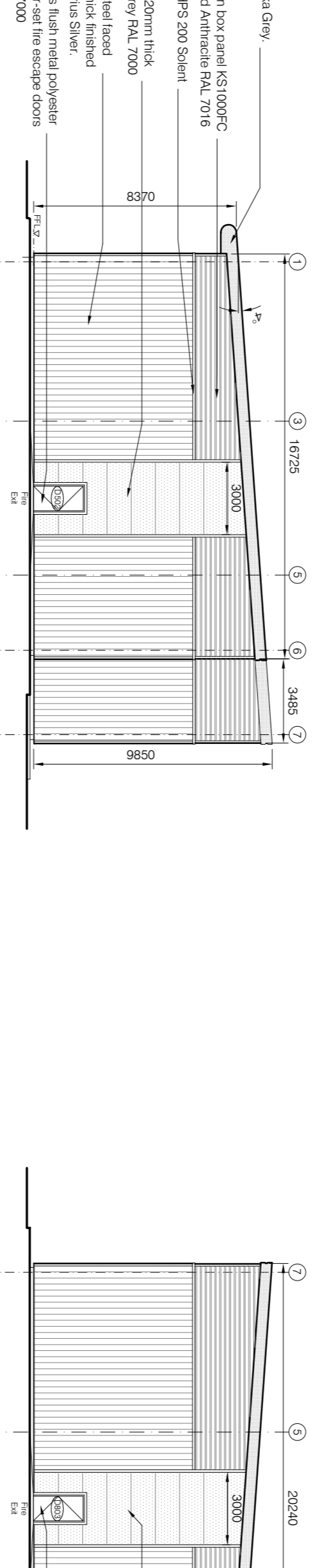
**Rain Water Pipe:**  
RWP sizes and locations to be provided by Contractor and/or cladding and roofing specialist, and approved by Architects and Engineers.

Trisomet insulated steel roof panel in HPS200 Ultra Alaska Grey RAL 7000 to achieve a minimum U-value of 0.18 W/m<sup>2</sup>K. See spec clause H20  
Bull-nose feature eaves in Alaska Grey. See spec clause H20  
Kingspan Five Crown box panel KS1000FC. 100mm thick finished Anthracite RAL 7016  
Feature flashing in HPS 200 Solent Blue RAL 240 40 40.  
Trisomet micro-rib 120mm thick finished in Ultra White RAL 9003  
Trisomet insulated steel faced wall panel 120mm thick finished Colocoral Prisma Silver Silver.  
Electrically operated overhead section goods door by Assa Abloy Crawford (or similar). See spec clause 20.9-20.11  
Kamneer AA720 glazing system with integrated entrance door, top hung windows, look-alike glazed panels and louvre in RAL 7016. See spec clause L10 for details and 885C802 for dimensions.  
Double glazed pivot open round window by Kamneer or similar product to be approved by Architect in RAL 7016. See spec clause L10 for details and 885C802 for dimensions.  
Rendered block work, Weber sld White 000



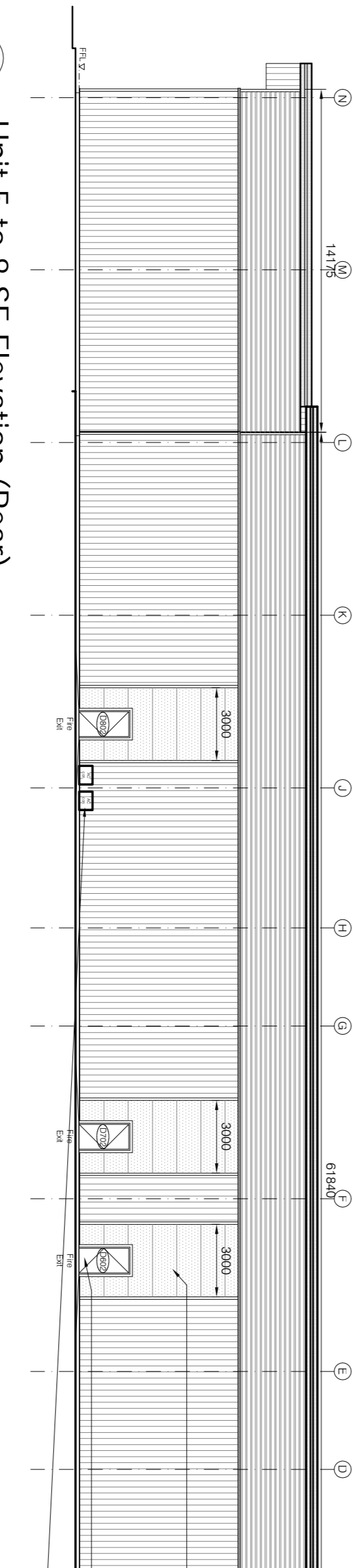
**1 Unit 5 to 8 NW Elevation (Front)**  
Scale: 1:200

Verge detail in Alaska Grey.  
Kingspan Five Crown box panel KS1000FC 100mm thick finished Anthracite RAL 7016  
Feature flashing in HPS 200 Solent Blue RAL 240 40 40.  
Trisomet micro-rib 120mm thick finished in Alaska Grey RAL 7000  
Trisomet insulated steel faced wall panel 120mm thick finished Colocoral Prisma Silver Silver.  
Taskmaster S Series flush metal polyester powder coated door-set fire escape doors in Alaska Grey RAL7000



**2 Unit 5 to 8 SW Elevation**  
Scale: 1:200

Verge detail in Alaska Grey.  
Soffit detail in Alaska Grey.  
Kingspan Five Crown box panel KS1000FC 100mm thick finished Anthracite RAL 7016  
Feature flashing in HPS 200 Solent Blue RAL 240 40 40.  
Trisomet micro-rib 120mm thick finished in Alaska Grey RAL 7000  
Trisomet insulated steel faced wall panel 120mm thick finished Colocoral Prisma Silver Silver.  
Taskmaster S Series flush metal polyester powder coated door-set fire escape doors in Alaska Grey RAL7000  
Indicative locations for AC condensers (AC unit in Silver Metallic RAL 9006, to ERS specification)



**4 Unit 5 to 8 SE Elevation (Rear)**  
Scale: 1:200

**the D.C.M. Partnership**  
ARCHITECTS  
100, MARKET STREET, SUITE 100, WASHINGTON, DC 20005  
TEL: 202 638 2888 / FAX: 202 638 2899  
EMAIL: DCMPARTN@DCM.COM

**Blakelands LLP**  
Unit 5-8 Elevations

**865/C/402C**

**Princes Business Centre**  
Summerleys Road

SCALE	DATE
1:200@a2	19 10 17

The drawing is protected by copyright. All rights reserved. Any reproduction, storage, or distribution of this drawing without the written permission of the Architect is prohibited. Dispersions must be referred to the Architect for clarification. Do not scale.

ISSUED FOR APPROVAL	DRAWN	CHECKED
FOR CONSTRUCTION	JSS	
AS SHOWN		

**For Tender**