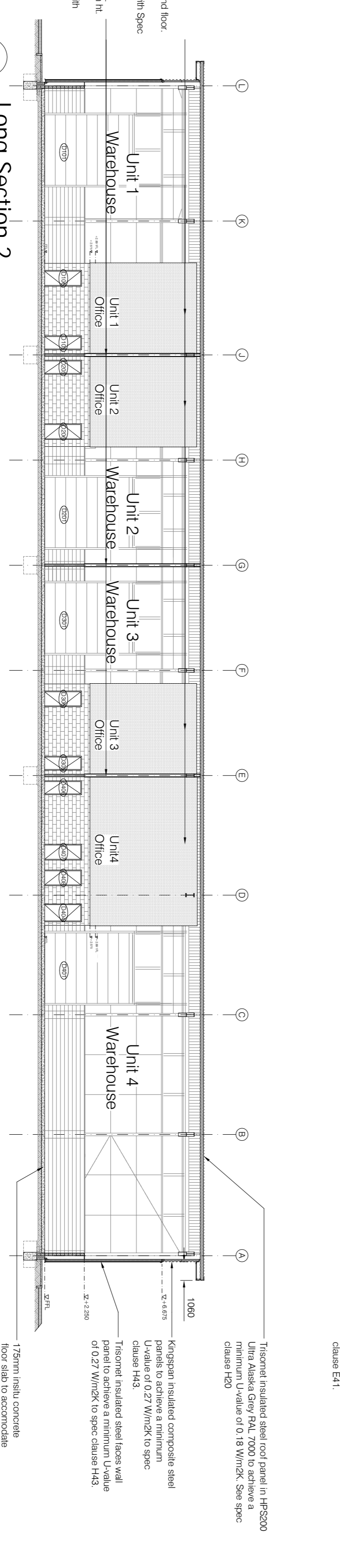
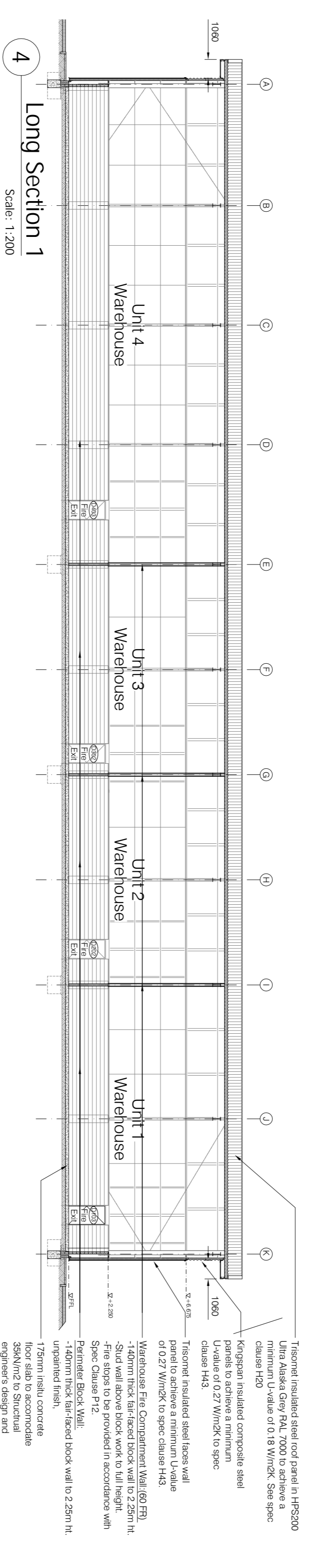
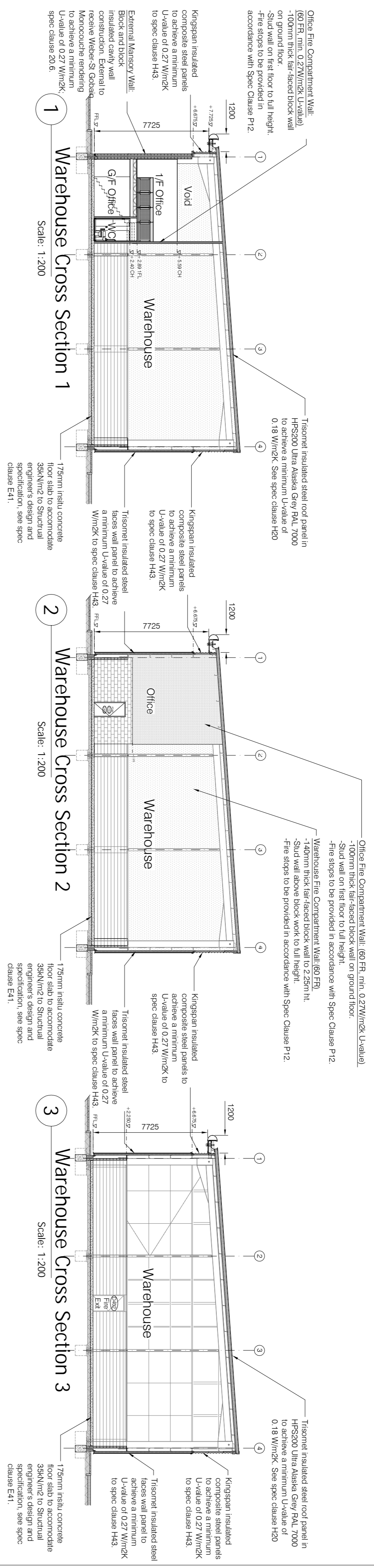


**REVISIONS**

| NO. | REVISION                         | DATE     |
|-----|----------------------------------|----------|
| A   | Design development revision.     | 08 11 17 |
|     | Revision to structural grid 1/F. |          |
|     | increased by 170mm to            |          |
|     | engineer's comments.             |          |
| B   | View no. 1&2 office walls        | 17 11 17 |
|     | revised to accommodate           |          |
|     | thermal insulation.              |          |



- Office Fire Compartment Wall:**  
 (60 FR, min. 0.27 W/m<sup>2</sup>K U-value)  
 -100mm thick fair-faced block wall on ground floor.  
 -Stud wall on first floor to full height.  
 -Fire stops to be provided in accordance with Spec Clause P12.
- Warehouse Fire Compartment Wall (60 FR):**  
 -140mm thick fair-faced block wall to 2.25m ht.  
 -Stud wall above block work to full height.  
 -Fire stops to be provided in accordance with Spec Clause P12.

For Tender

|   |   |  |
|---|---|--|
| <p><b>CLIENT</b><br/>Blakelands LLP</p> <p><b>PROJECT</b><br/>Unit 1-4 Sections<br/>865/C/501B</p> <p><b>PRODUCT</b><br/>Princes Business Centre<br/>Summerleys Road</p> <p><b>SCALE</b><br/>1:200 @a2</p> <p><b>DATE</b><br/>19 10 17</p> <p><b>DESIGNED BY</b><br/>JSS</p> <p><b>CHECKED BY</b><br/>JSS</p> | <p><b>D.C.M.</b><br/>Partnership</p> <p>THE DESIGN AND CONSTRUCTION OF BUILDINGS<br/>             200, WINDMILL LANE, BIRMINGHAM, B15 2EJ<br/>             TEL: 0121 717 3200 FAX: 0121 717 3209<br/>             WWW.DCMDESIGN.COM</p> | <p><b>ISSUED FOR CONSTRUCTION</b></p> <p><b>DESIGNED BY</b><br/>JSS</p> <p><b>CHECKED BY</b><br/>JSS</p> <p><b>DATE</b><br/>19 10 17</p> |
|---|---|--|

This drawing is protected by copyright. All rights reserved. Dispersions must be requested to the architect for clarification. Do not scale.