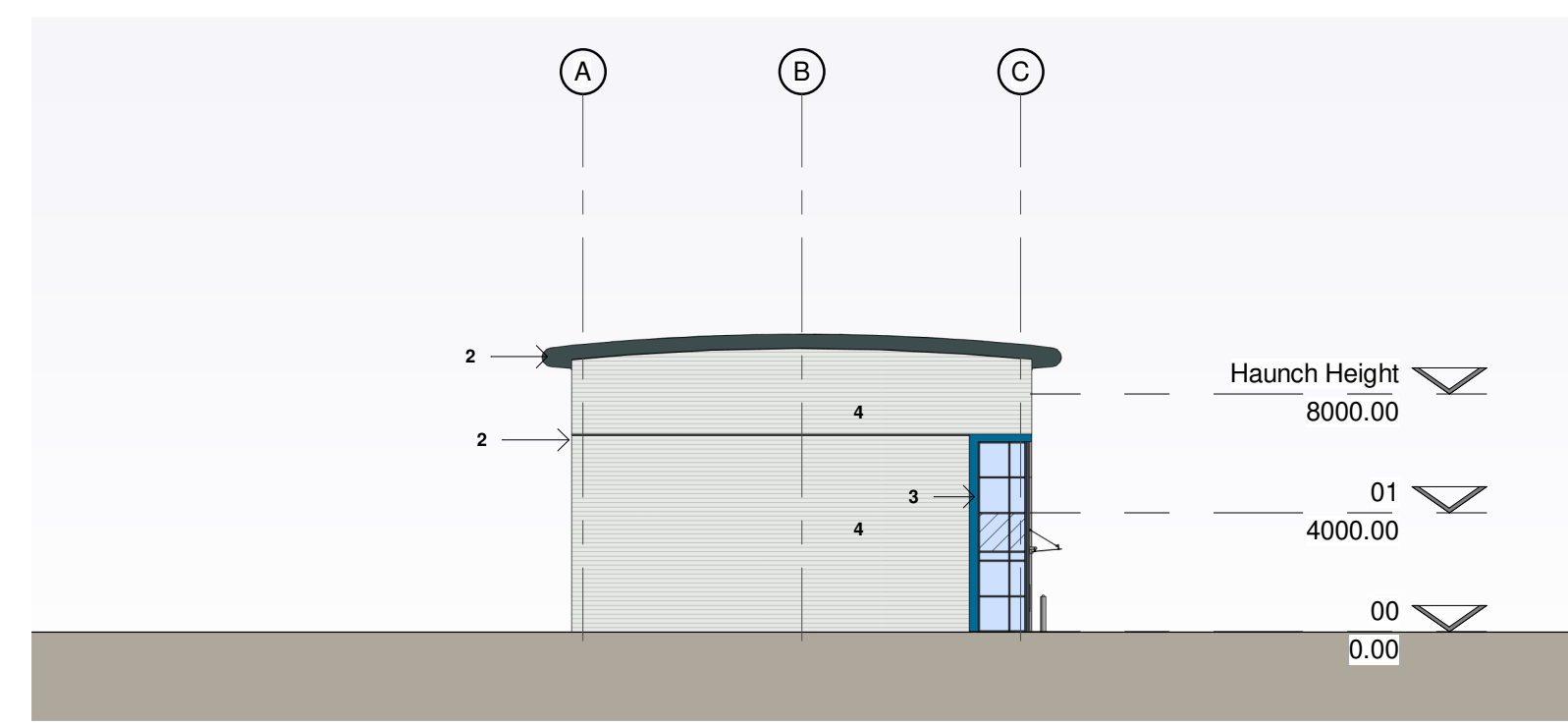
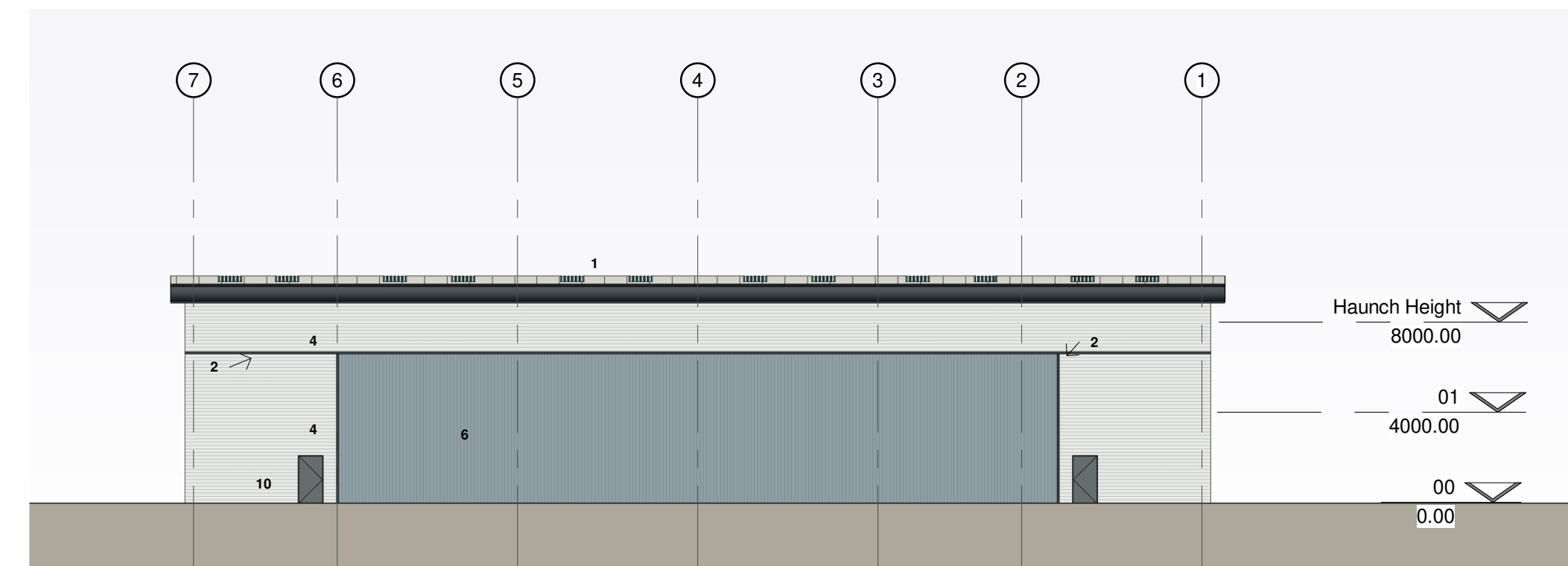


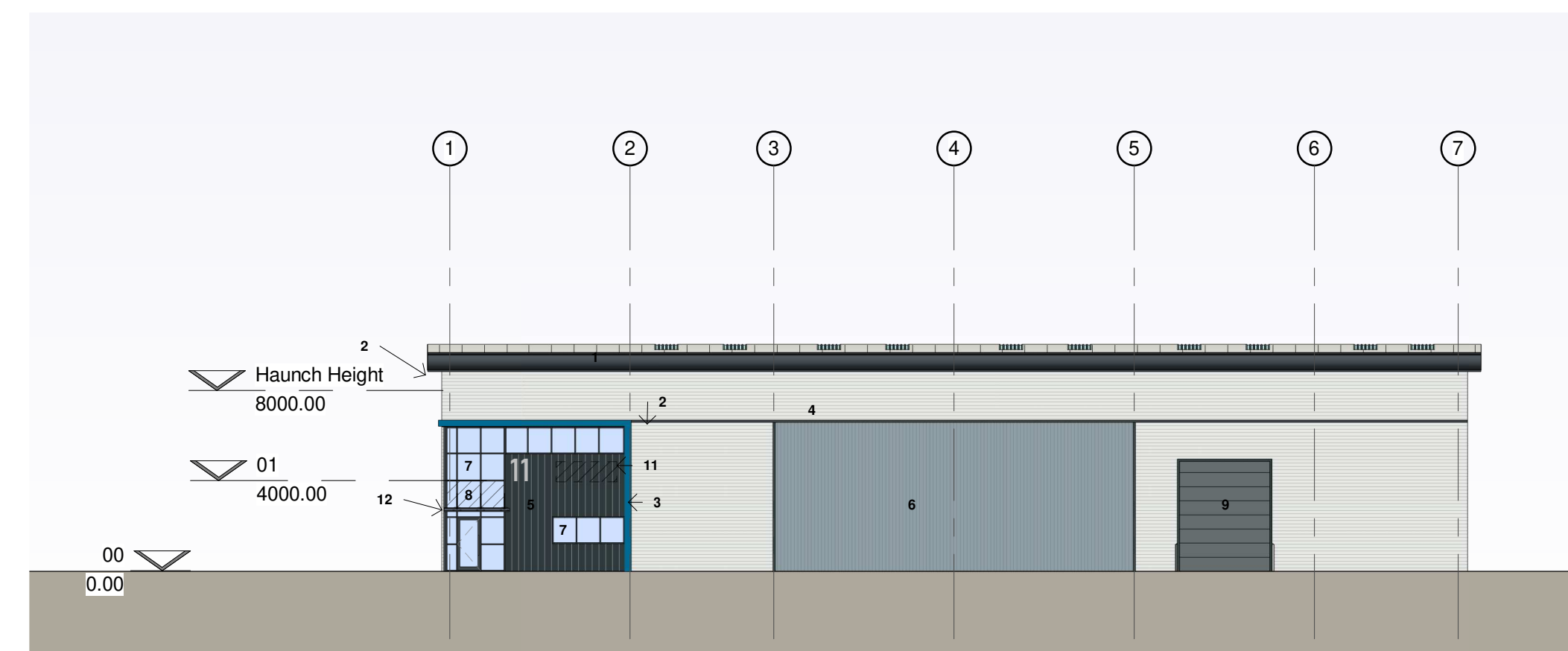
1 South Elevation
1 : 250



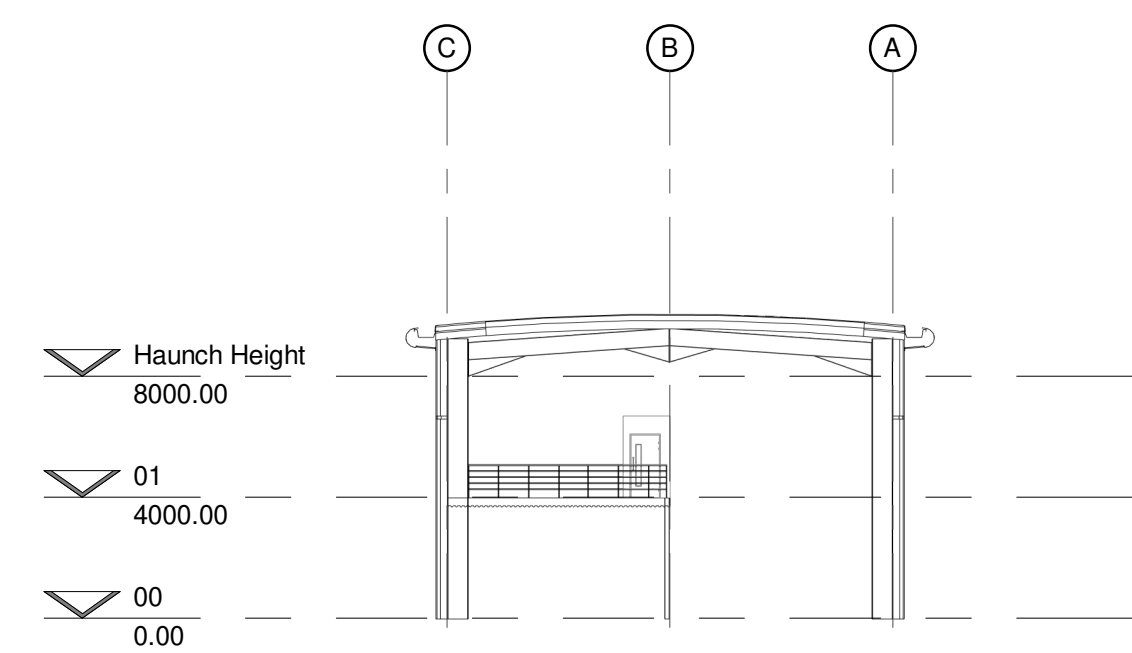
4 North Elevation
1 : 250



2 East Elevation
1 : 250



3 West Elevation
1 : 250



5 Warehouse Section
1 : 250

Materials Key

- CA trapezoidal profile built up roof cladding
Colour: Goosewing Grey (Ral 7038)
- Eaves/Verge, feature flashing and Gutter
Colour: Anthracite (RAL 7016)
- Feature Flashing (Office Entrance)
Colour: Westhall Blue (RAL 240 40 40)
- CA trapezoidal profile built up cladding laid horizontally
Colour: Silver
- CA trapezoidal profile built up cladding laid vertically
Colour: Anthracite (RAL 7016)
- CA trapezoidal profile built up cladding laid vertically
Colour: Alaska Grey (RAL 7000)
- Curtain walling/Windows ppc aluminium
Colour: Anthracite (RAL 7016)
- (windows to be formed with curtainwalling sections)
Spandrel panels
Colour: Look-a-like glazing
- Level Access Door
Colour: Slate Grey (RAL 7012)
- Fire Escape Doors
Colour: Slate Grey (RAL 7012)
- Signage Zone
- Glass canopy over office entrance

SGP

Architects + Masterplanners

Waterfront House
2a Smith Way
Grove Park
Enderby
Leicester LE19 1SX

t: +44 (0)116 247 0557

www.stephengeorge.co.uk

Rycote Lane, Thame - Unit 11

Drawing Name:
Proposed Elevations

Drawing Stage: **S2**

Status: **Planning**

SGP File Ref: 19-250

19-250 02/02/2021 JMS MMS As Noted @ A1 B

SGP Project No: Date: Drawn: Team: Scale: Rev:

Drawing Number:
19-250- SGP- 11- ZZ-DR-A- 121131

Project Code Originator Volume Level Type Role Number

