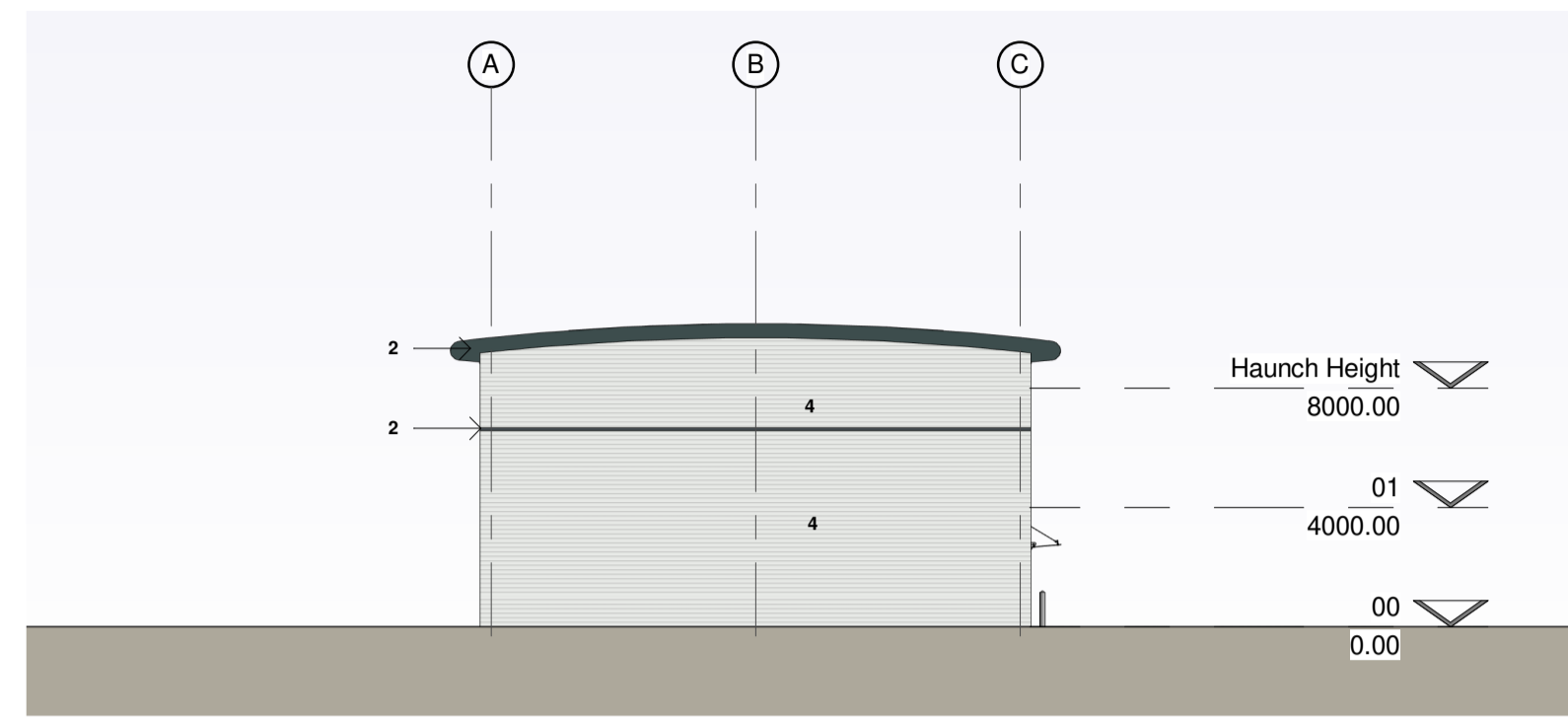
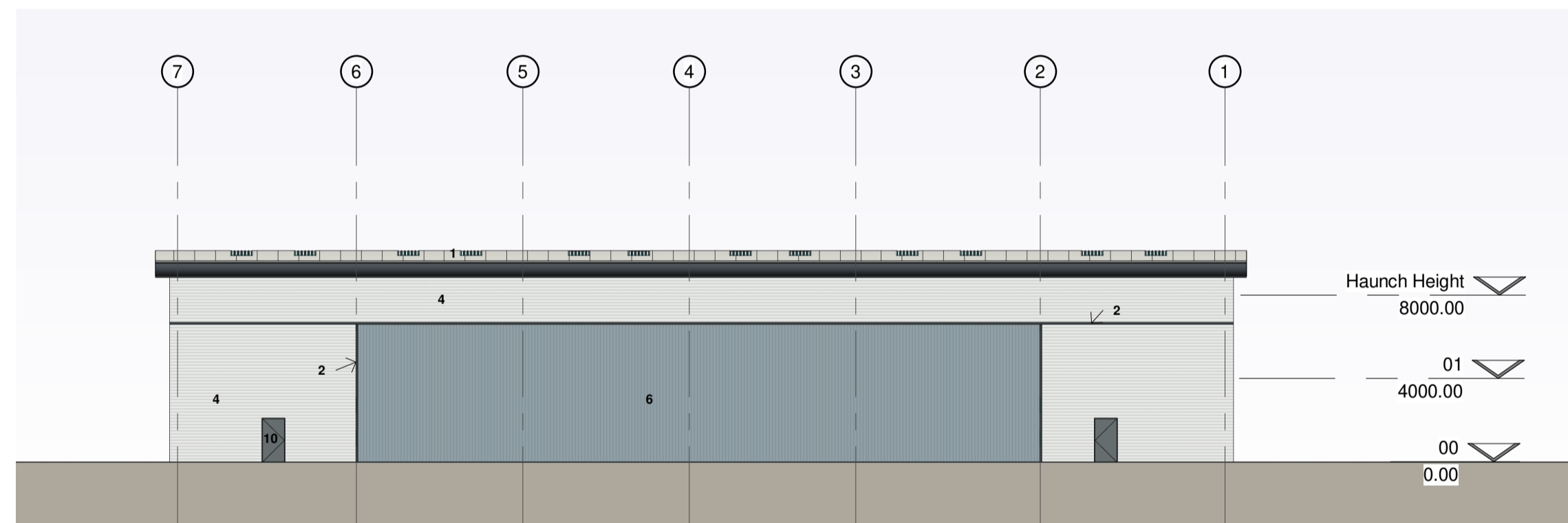


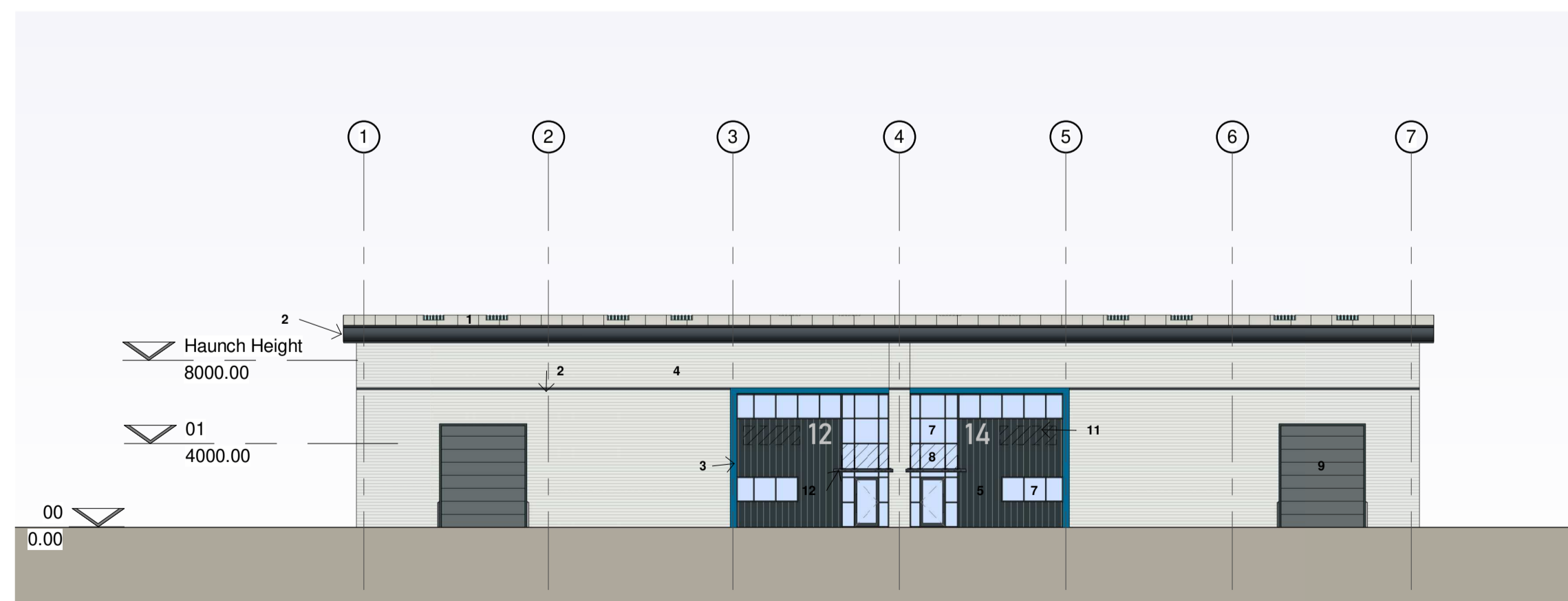
1 North Elevation
 1 : 250



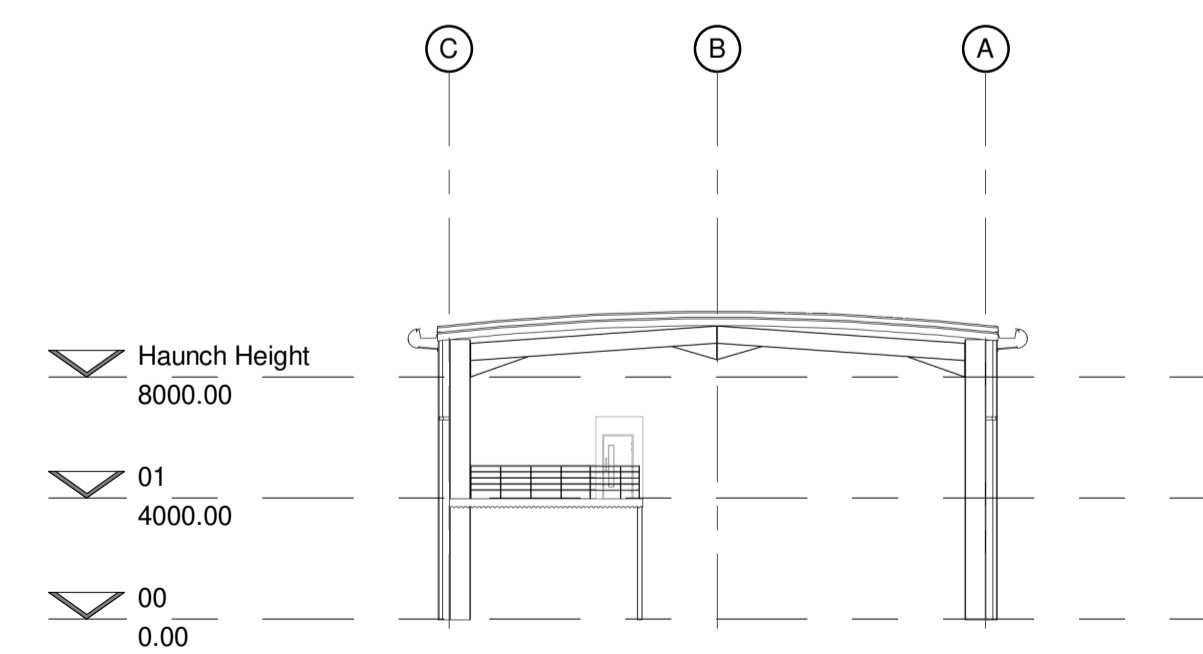
4 South Elevation
 1 : 250



2 West Elevation
 1 : 250



3 East Elevation
 1 : 250



5 Warehouse Section
 1 : 250

Materials Key

1. CA trapezoidal profile built up roof cladding
 Colour: Goosewing Grey (Ral 7038)
2. Eaves/Verge, feature flashing and Gutter
 Colour: Anthracite (RAL 7016)
3. Feature Flashing (Office Entrance)
 Colour: Westhall Blue (RAL 240 40 40)
4. CA trapezoidal profile built up cladding laid horizontally
 Colour: Silver
5. CA trapezoidal profile built up cladding laid vertically
 Colour: Anthracite (RAL 7016)
6. CA trapezoidal profile built up cladding laid vertically
 Colour: Alaska Grey (RAL 7000)
7. Curtain walling/Windows ppc aluminium
 Colour: Anthracite (RAL 7016)
 (windows to be formed with curtainwalling sections)
8. Spandrel panels
 Colour: Look-a-like glazing
9. Level Access Door
 Colour: Slate Grey (RAL 7012)
10. Fire Escape Doors
 Colour: Slate Grey (RAL 7012)
11. Signage Zone
12. Glass canopy over office entrance

SGP

Architects + Masterplanners

Waterfront House
 2a Smith Way
 Grove Park
 Enderby
 Leicester LE19 1SX

t: +44 (0)116 247 0557

www.stephengeorge.co.uk

Rycote Lane, Thame - Unit 12 & 14

Drawing Name:
 Proposed Elevations

Drawing Stage: **S2**

Status: **Planning**

SGP File Ref: 19-250

19-250 23/02/2021 JMS MMS As Noted @ A1 A

SGP Project No. Date: Drawn: Team: Scale: Rev:

Drawing Number:
 19-250- SGP-12_14-ZZ-DR-A- 121131

Project Code Originator Volume Level Type Role Number

