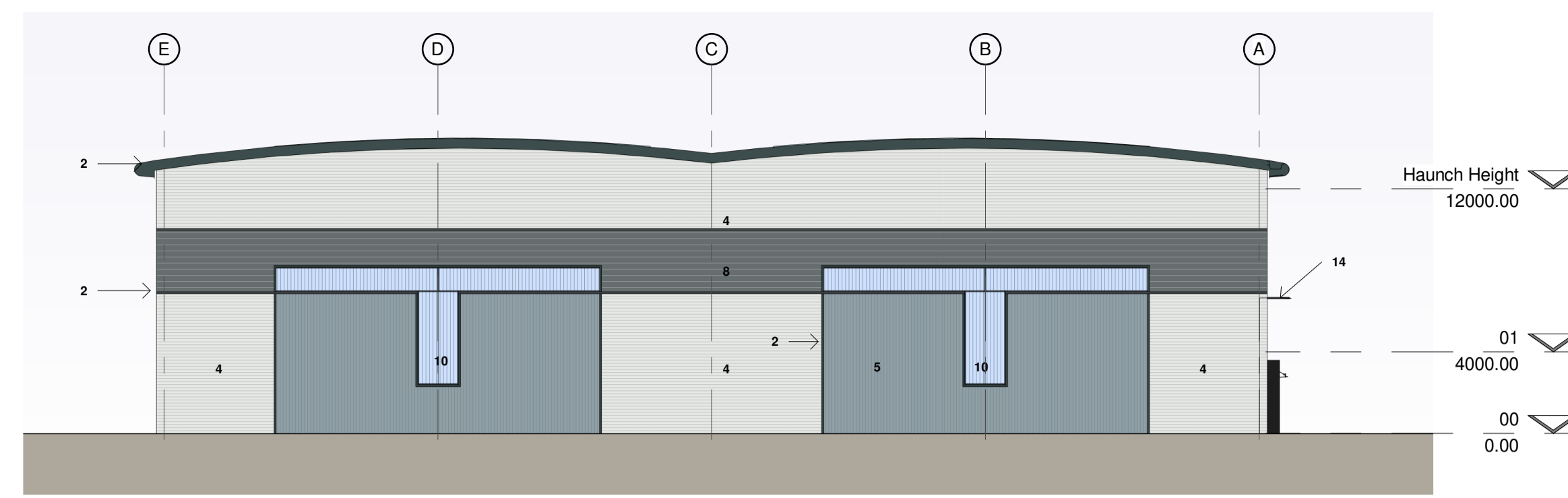
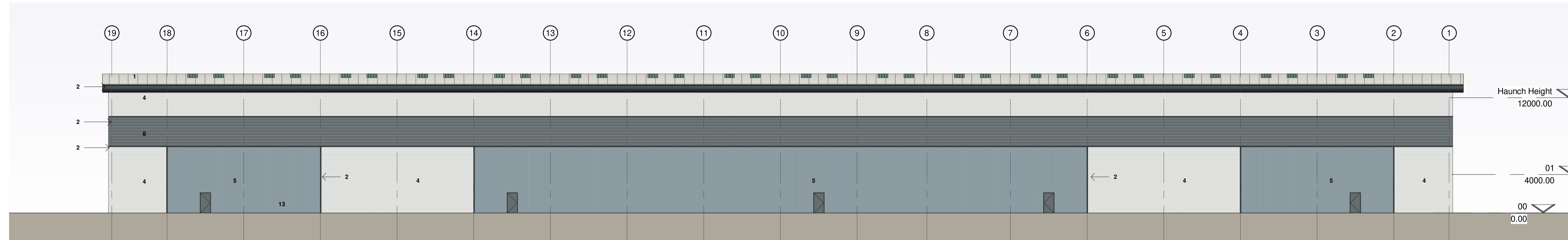


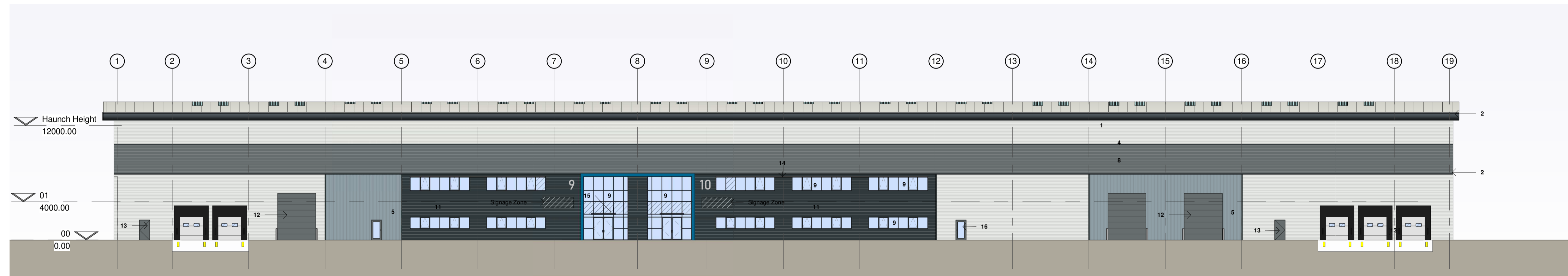
1 East Elevation
1 : 250



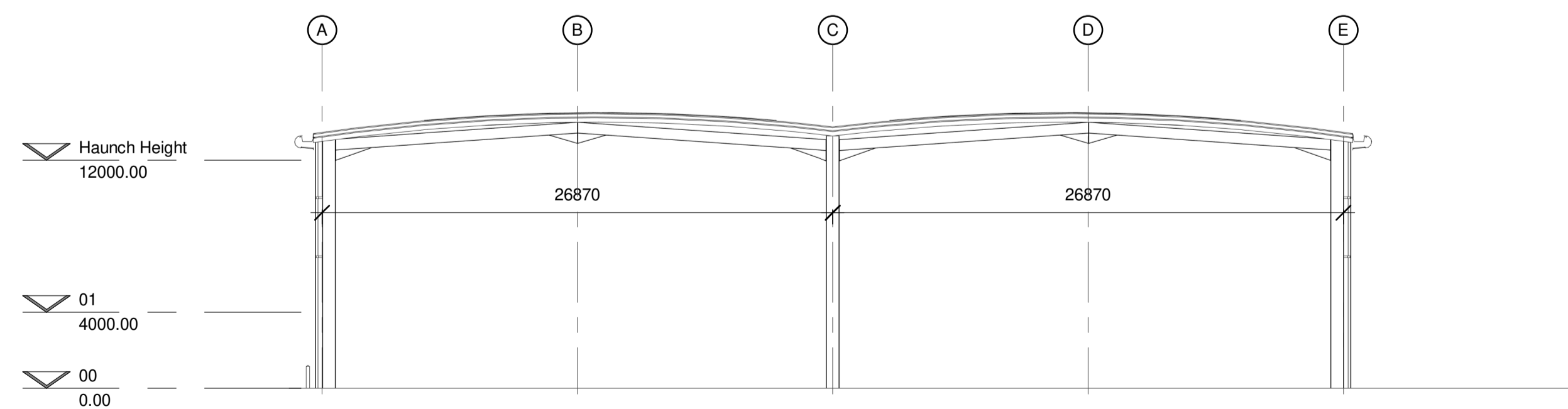
4 West Elevation
1 : 250



2 North Elevation
1 : 250



3 South Elevation
1 : 250



5 Warehouse Section
1 : 250

Materials Key

1. CA trapezoidal profile built up roof cladding
Colour: Goosewing Grey (Ral 7038)
2. Eaves/Verge, feature flashing and Gutter
Colour: Anthracite (RAL 7016)
3. Feature Flashing (Office Entrance)
Colour: Westhall Blue (RAL 240 40 40)
4. CA trapezoidal profile built up cladding laid horizontally
Colour: Silver
5. CA trapezoidal profile built up cladding laid vertically
Colour: Alaska Grey (RAL 7000)
6. CA trapezoidal profile built up cladding laid vertically
Colour: Anthracite (RAL 7016)
7. CA trapezoidal profile panel built up cladding laid horizontally
Colour: Anthracite (RAL 7016)
8. CA trapezoidal profile built up cladding laid horizontally
Colour: Slate Grey (RAL 7012)
9. Curtain walling/Windows ppc aluminium
Colour: Anthracite (RAL 7016)
(windows to be formed with curtainwalling sections)
10. Translucent cladding panels
11. Spandrel panels
Colour: Look-a-like glazing
12. Level Access Door
Colour: Slate Grey (RAL 7012)
13. Fire Escape Doors
Colour: Slate Grey (RAL 7012)
14. Brise-soleil 1200mm above window/curtain walling.
Polyester powder coated aluminium (RAL 7016)
15. Glass canopy over office entrance
16. PPC Aluminium Fire escape door with glazing.
Colour: Slate Grey (RAL 7012)

SGP

Architects + Masterplanners

Waterfront House
2a Smith Way
Grove Park
Enderby
Leicester LE19 1SX

t: +44 (0)116 247 0557

www.stephengeorge.co.uk

Rycote Lane, Thame - Unit 9 & 10

Drawing Name:
Proposed Elevations

Drawing Stage: S2

Status: Planning

SGP File Ref: 19-250

19-250 24/02/2021 JMS MMS As Noted @ A1 A

SGP Project No: Date: Drawn: Team: Scale: Rev:

Drawing Number: 19-250- SGP- 9_10- ZZ-DR-A- 121131

Project Code Originator Volume Level Type Role Number

