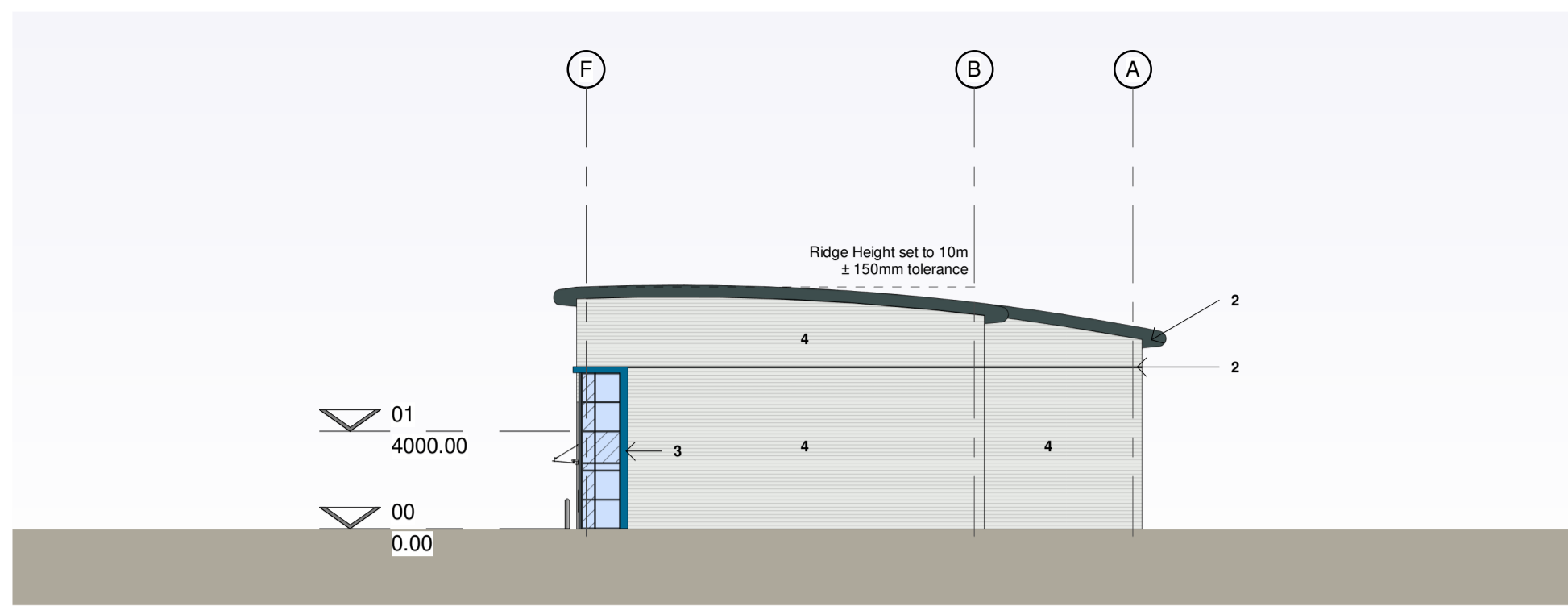
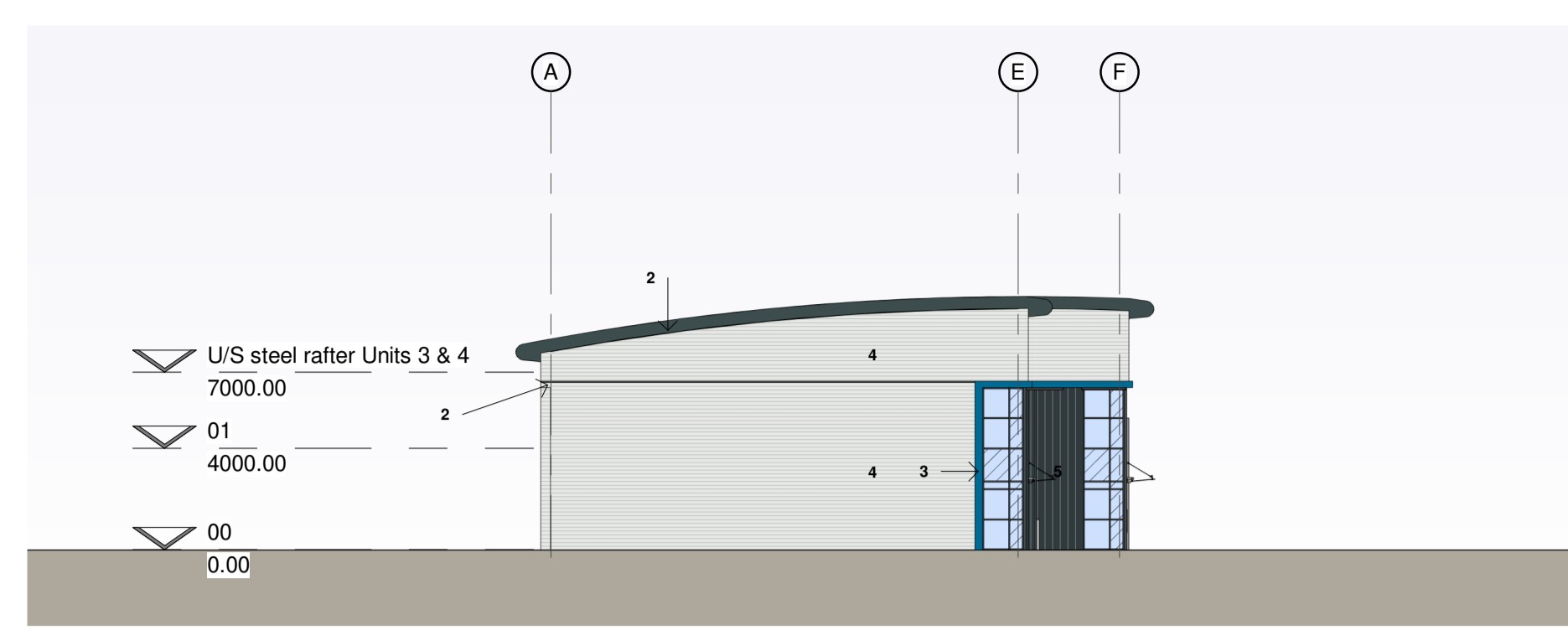


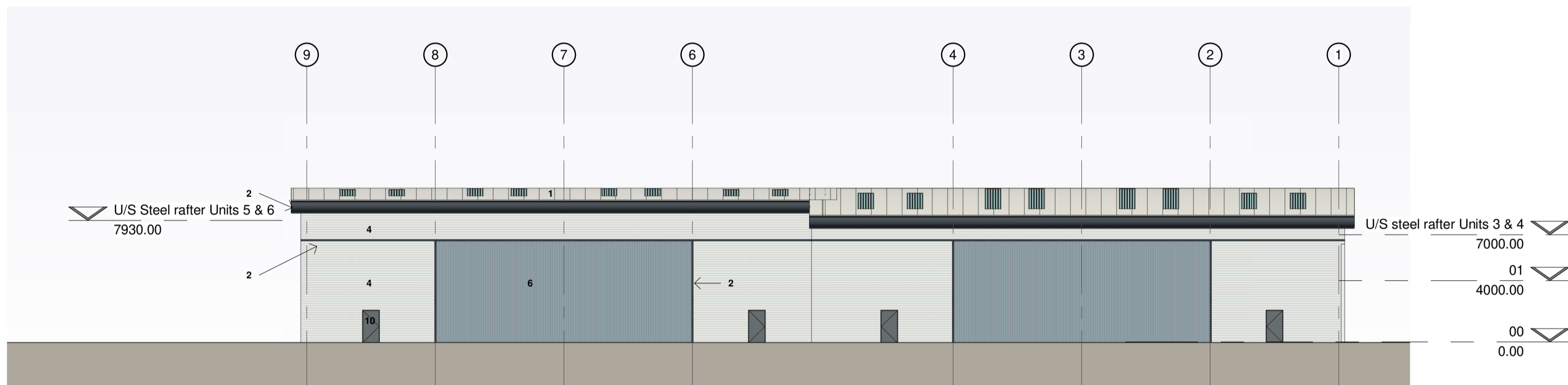
Rev	Date	By	Description
A	13/01/2021	JMS	Amendments made in accordance with client comments.
B	18/01/2021	JMS	Roof amended to curved monopitch design.
C	02/02/2021	JMS	Amendments made in accordance with client comments.
D	04/03/2021	JMS	Amendments made in accordance with client comments.



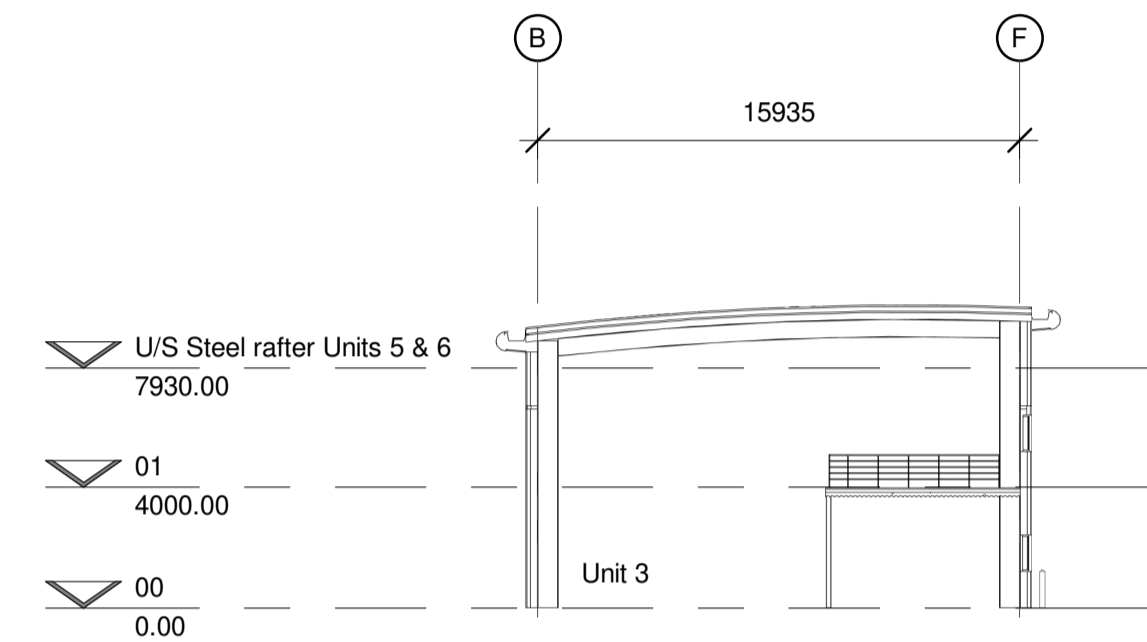
1 North Elevation
1 : 250



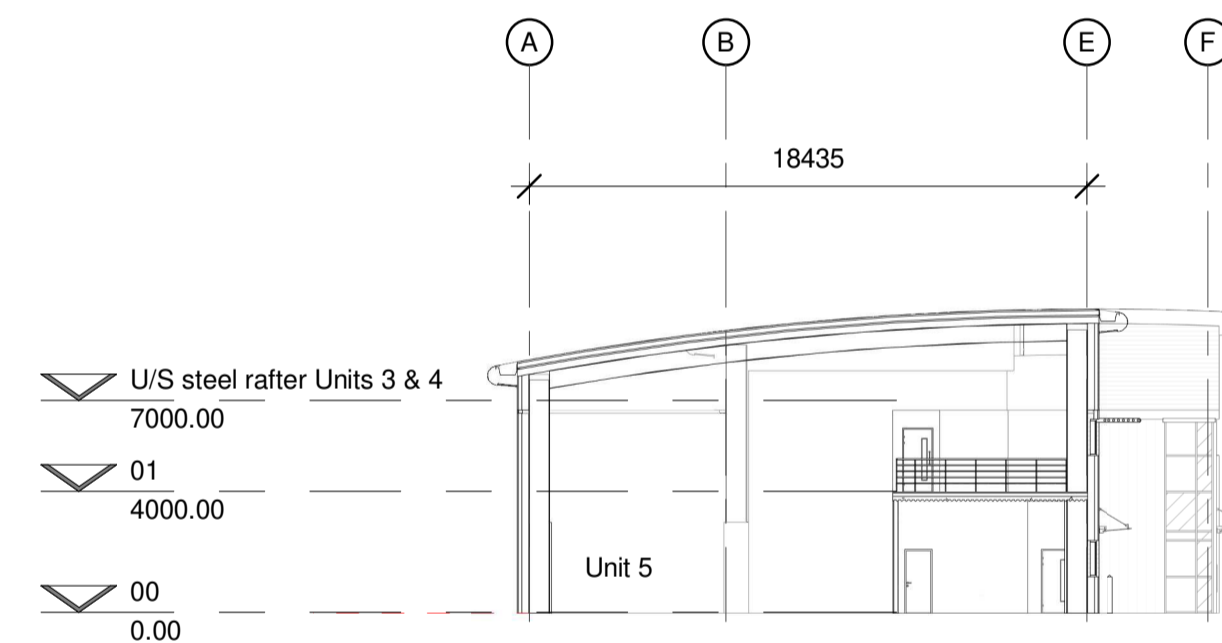
4 South Elevation
1 : 250



2 West Elevation
1 : 250



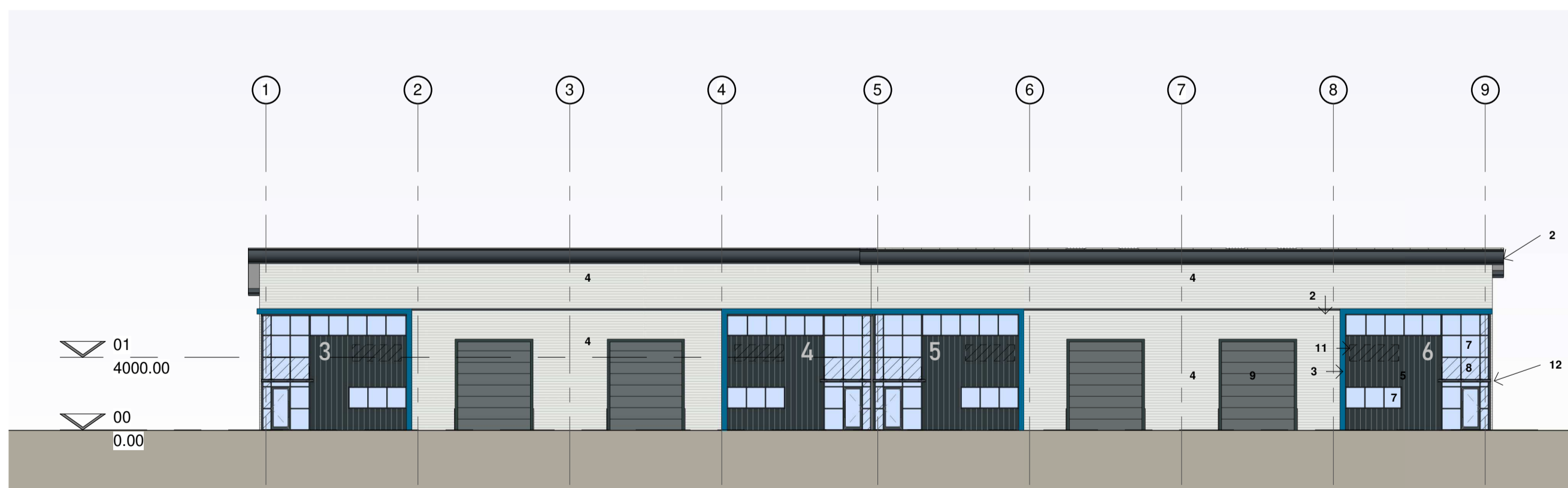
5 Warehouse Section Units 3 & 4
1 : 250



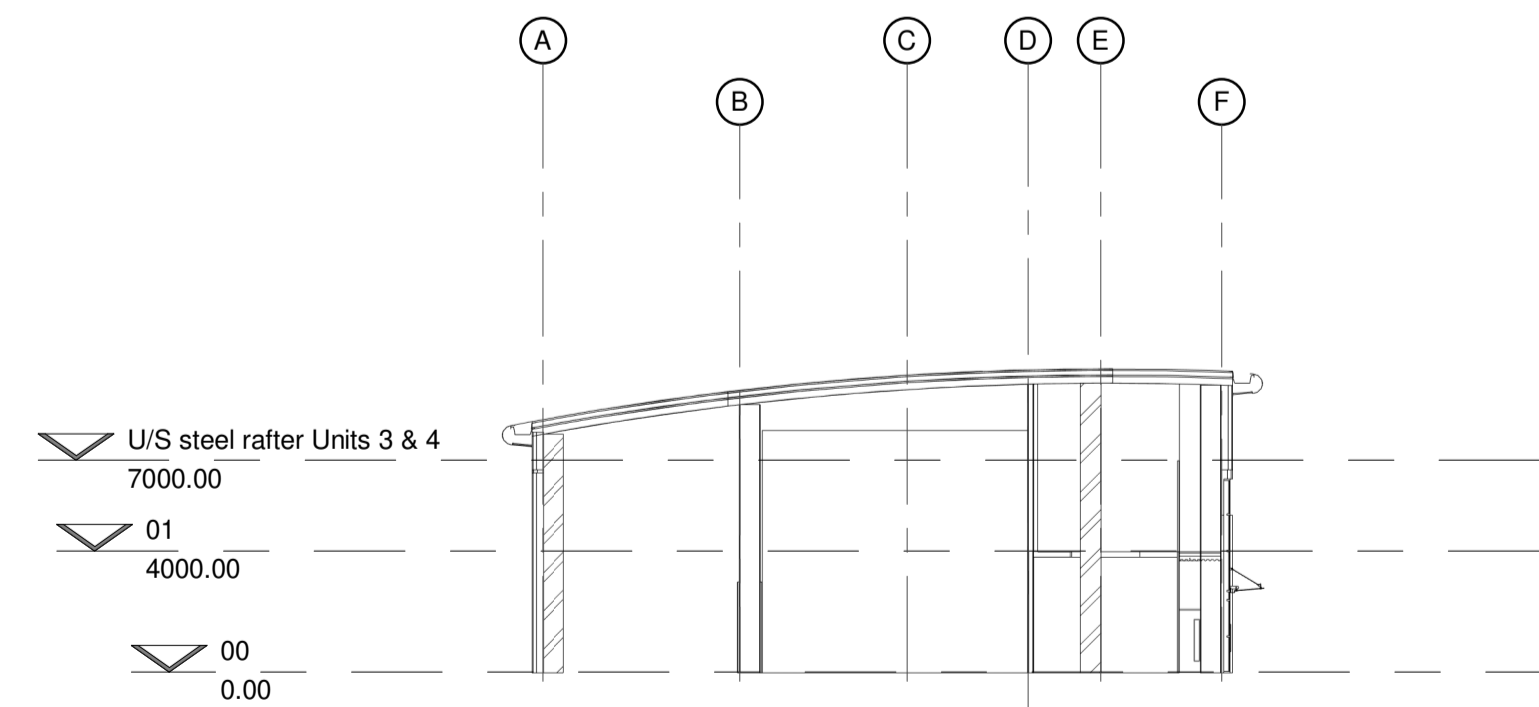
6 Warehouse Section Units 5 & 6
1 : 250

Materials Key

- CA trapezoidal profile built up roof cladding
Colour: Goosewing Grey (Ral 7038)
- Eaves/Verge, feature flashing and Gutter
Colour: Anthracite (RAL 7016)
- Feature Flashing (Office Entrance)
Colour: Westhall Blue (RAL 240 40 40)
- CA trapezoidal profile built up cladding laid horizontally
Colour: Silver
- CA trapezoidal profile built up cladding laid vertically
Colour: Anthracite (RAL 7016)
- CA trapezoidal profile built up cladding laid vertically
Colour: Alaska Grey (RAL 7000)
- Curtain walling/Windows ppc aluminium
Colour: Anthracite (RAL 7016)
- (windows to be formed with curtainwalling sections)
- Spandrel panels
Colour: Look-a-like glazing
- Level Access Door
Colour: Slate Grey (RAL 7012)
- Fire Escape Doors
Colour: Slate Grey (RAL 7012)
- Signage Zone
- Glass canopy over office entrance



3 East Elevation
1 : 250



7 Warehouse Section between Units 3/4 & 5/6
1 : 250

SGP

Architects + Masterplanners

Waterfront House
2a Smith Way
Grove Park
Enderby
Leicester LE19 1SX

t: +44 (0)116 247 0557

www.stephengeorge.co.uk

Rycoate Lane, Thame - Unit 3,4,5 + 6

Drawing Name:
Proposed Elevations

Drawing Stage: **S2**

Status: **Planning**

SGP File Ref: 19-250-SGP-3_4_5_6

19-250 03/07/20 JMS MMS As Noted @ A1 D

SGP Project No. Date Drawn Team Scale Rev

Drawing Number:
19-250- SGP- 3_6-ZZ-DR-A- 121131

Project Code Originator Volume Level Type Role Number

